

QClient

Author: Hamid Nadimi

Contact: hamid.nadimi@gmail.com

Oct. 2009

Version 0.7

Table of Contents

1 Introduction.....	2
2 Features.....	2
3 Quickstart.....	3
4 Connection Panel.....	3
5 Tabs.....	4
6 Inputpanel.....	5
7 Table-Panel.....	6
8 Log-Panel.....	10
9 Misc.....	11
10 Disclaimer.....	12

1 Introduction

QClient is a graphical user interface for KDB. It allows to open multiple tabs and run queries on different Servers in parallel. It is very handy in an environment with many q-servers on different machines.

2 Features

- Multiple tabs make it easy to check different servers. It is possible to reorder tabs by drag and drop.
- Server selection is easy and filtering possible based on host, servername, username. You can assign colors to different servers.
- You can insert/edit all connections quickly and save it with just a button-click if you want to save them.
- Displaying of lists and dictionaries in a tablepanel (which makes lookup a lot easier)
- Each query and all non-table results are logged by log4j (daily rolling file) and can be looked up later.
- Export all table results with just a right-click to csv.
- Sort results by one column (click on header) .
- Reorganize columns by drag and drop.
- Syntax highlighting.
- Right click to see list of tables, functions, structure of the selected table, create connection template (for example to copy data from one server to another).
- Right click to see list of tables, functions, structure of the selected table, create connection

template (for example to copy data from one server to another).

- Prints Connection/Retrieval status.
- Requires Java 1.6

3 Quickstart

Unpack zipfile.

Doubleclick QClient.jar.

Enter you Server parameters and press “save connection” if you want to keep it.

Write your query run it by “Enter + e”. If you want to run multiple lines mark them and use “ctrl + e”.

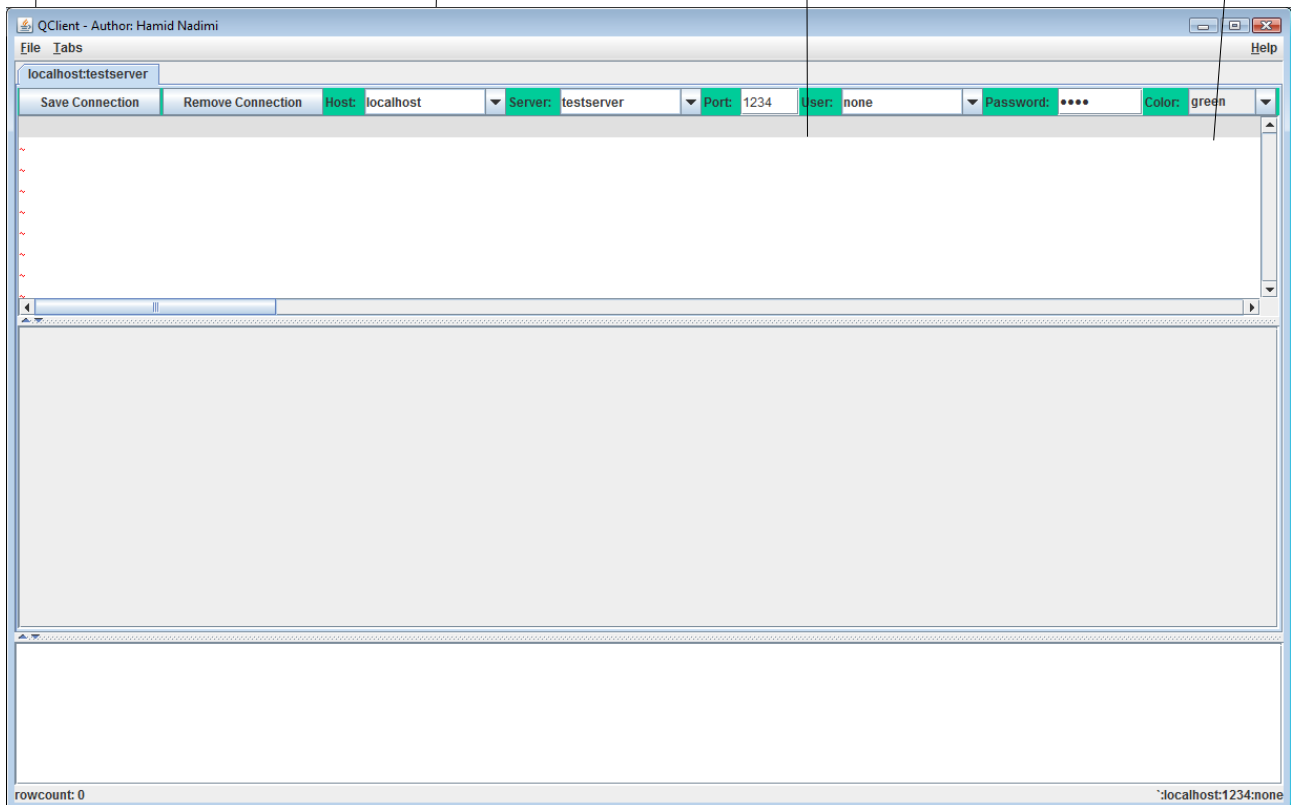
4 Connection Panel

Host + server of the current tab

All dropdown are also editable. Just enter new name and press enter. Save permanently by pressing Save Connection. Remove by pressing Remove Connection.

Remember to press enter after changing port or password. Notice change of connection in the statusbar.

Choose a color for this Server (for example red for production). In long run this is going to save you from a lot of trouble.



Host , port and username of the current tab

On the above screenshot you see all relevant information regarding connection handlings. In case you have many servers, you can also edit `cfg/KXConnections.xml` directly. The xml format is very simple:

```
<KXConnections>
```

```
<Host name="localhost" description="localhost" >
  <Server name="server1" port="1234">
    <User name="none" password="none" />
  </Server>
  <Server name="server2" port="1235">
    <User name="bla" password="blabla" />
    <User name="me" password="mepass" />
  </Server>
```

```
</Host>
```

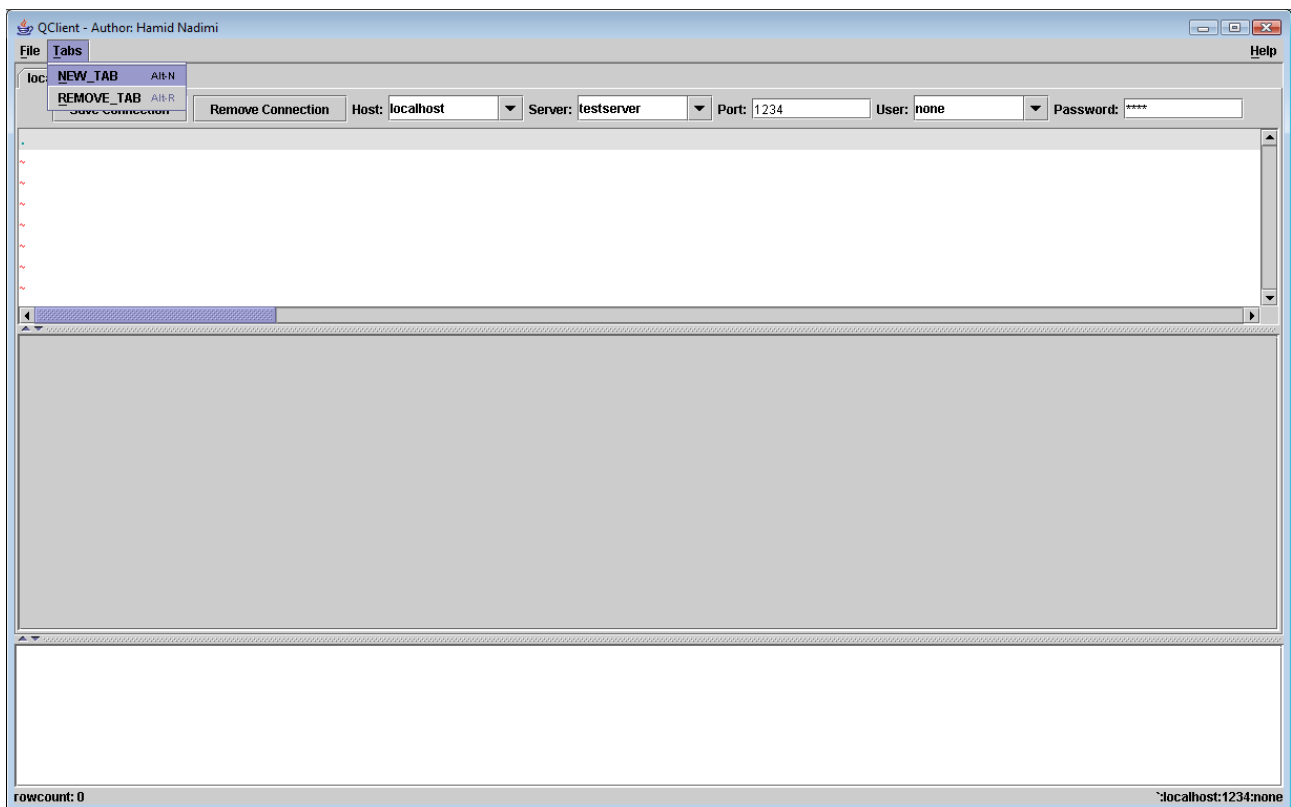
```
<Host name="host2" description="host2" >  
  <Server name="server1" port="1234">  
    <User name="none" password="none" />  
  </Server>  
  <Server name="server2" port="1235">  
    <User name="admin" password="adminpass" />  
  </Server>  
</Host>
```

```
</KXConnections>
```

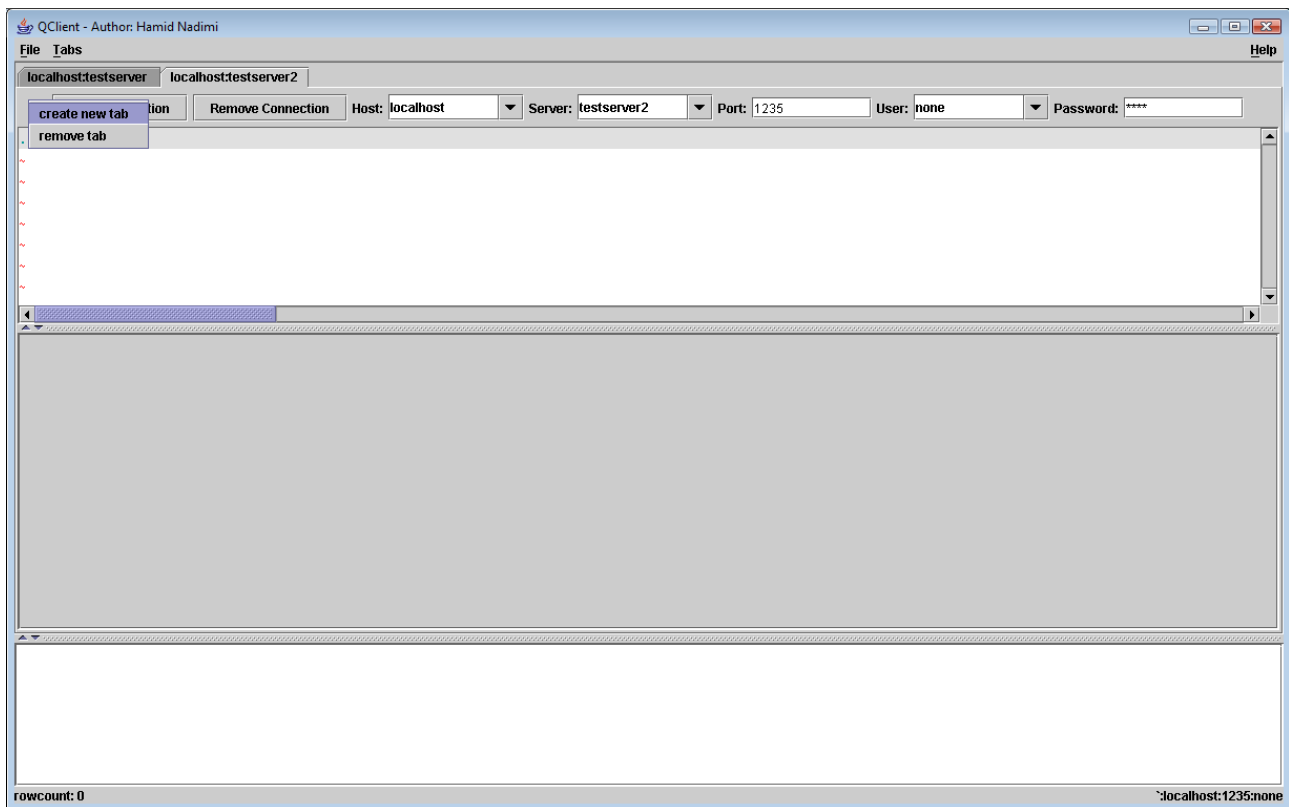
Remember to use “none” if there is no user/password for a server.

5 Tabs

You can open multiple tabs to connect to different servers via shortcut or menu.



or mouse-right-click:



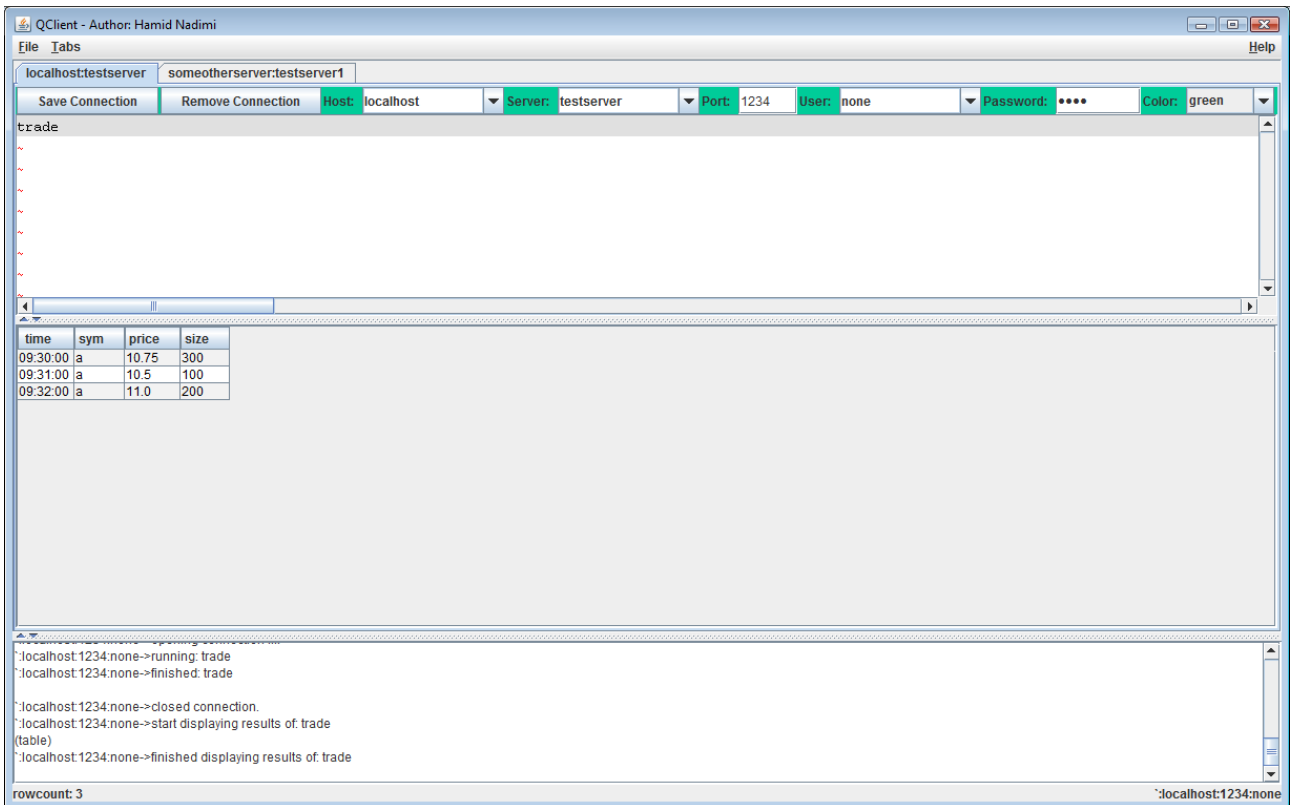
In the same way you can also close those tabs.

You can also reorganize tabs by simple drag and drop.

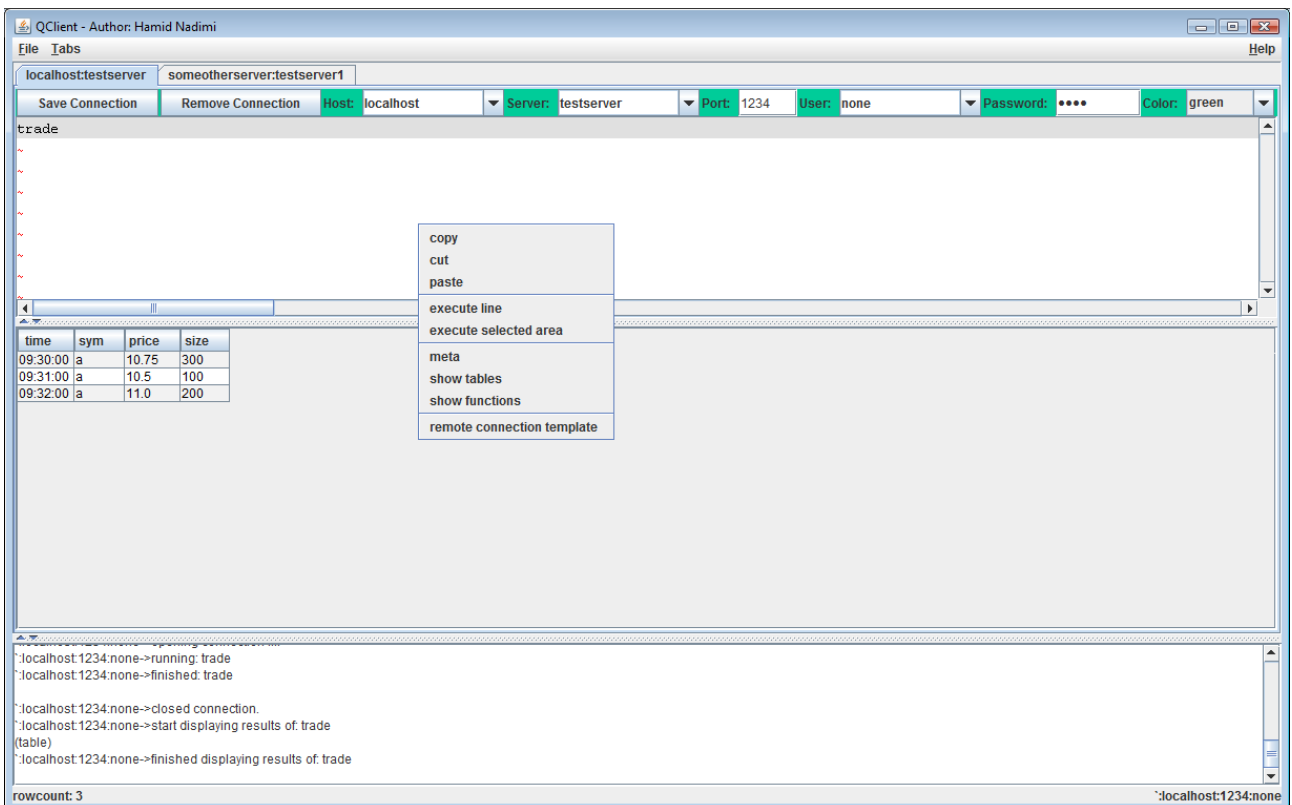
6 Inputpanel

On the input panel you can enter your queries. Ctrl+Enter executes currentline. Ctrl + e executes the marked area.

Syntax-highlighting helps readability.

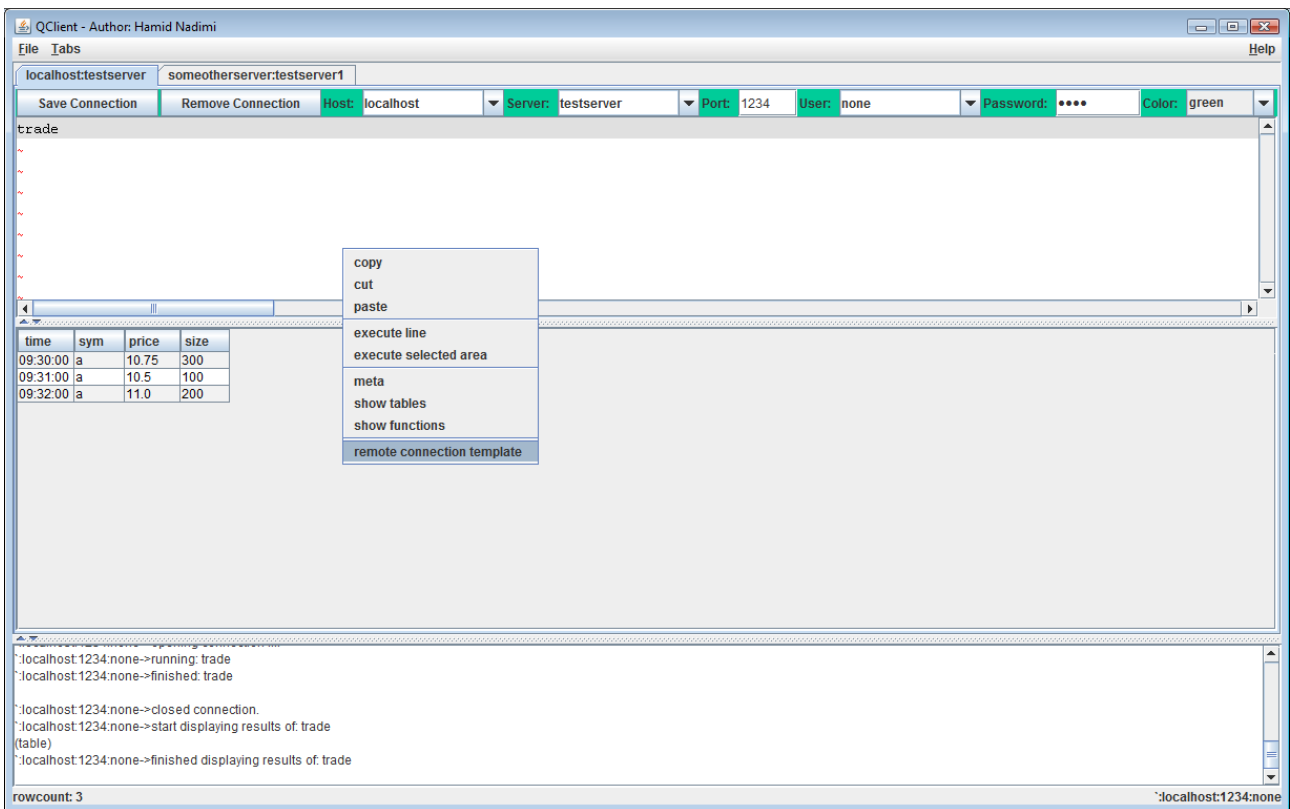


You can also use mouse-rightclick to get a list of tables, functions, copy selected area, paste from clipboard, run current line, run selected area or show the structure of a selected table (meta):

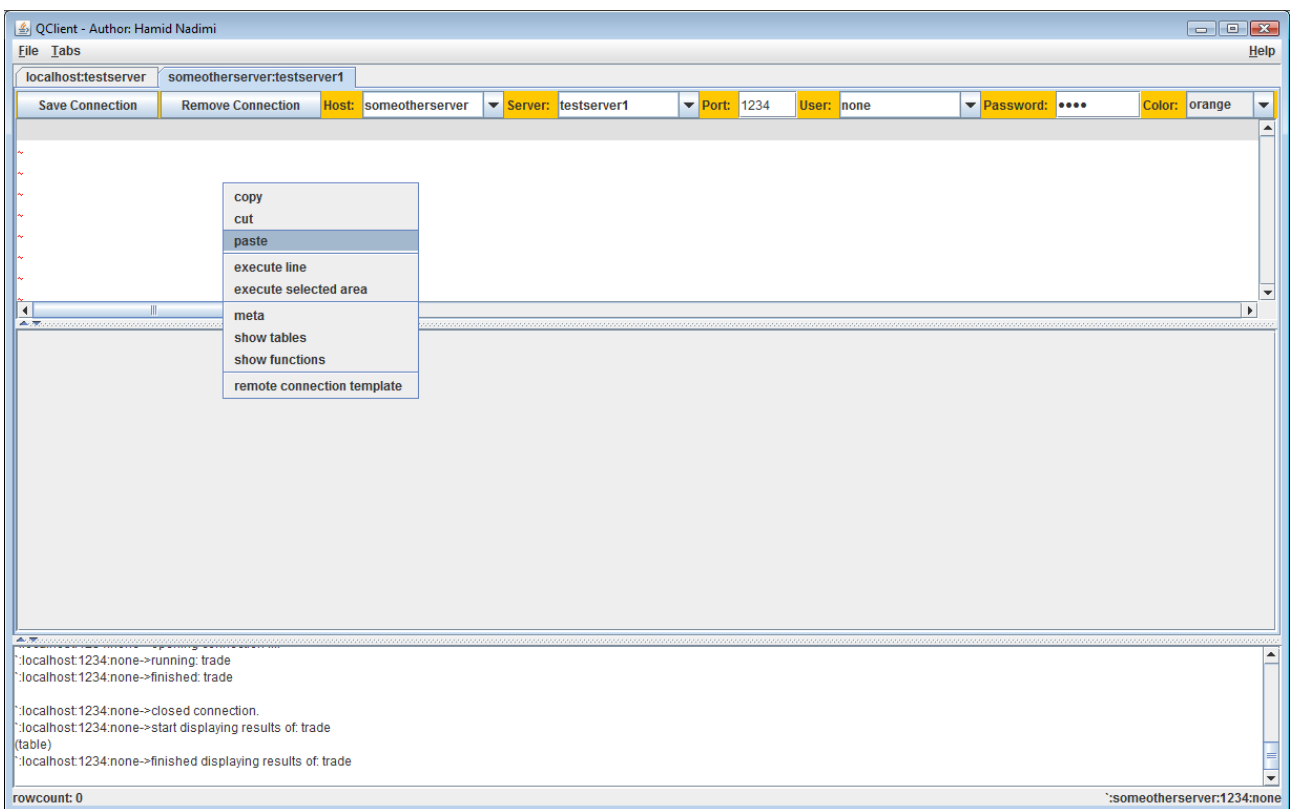


One handy feature is remote connection template which can be used like this:

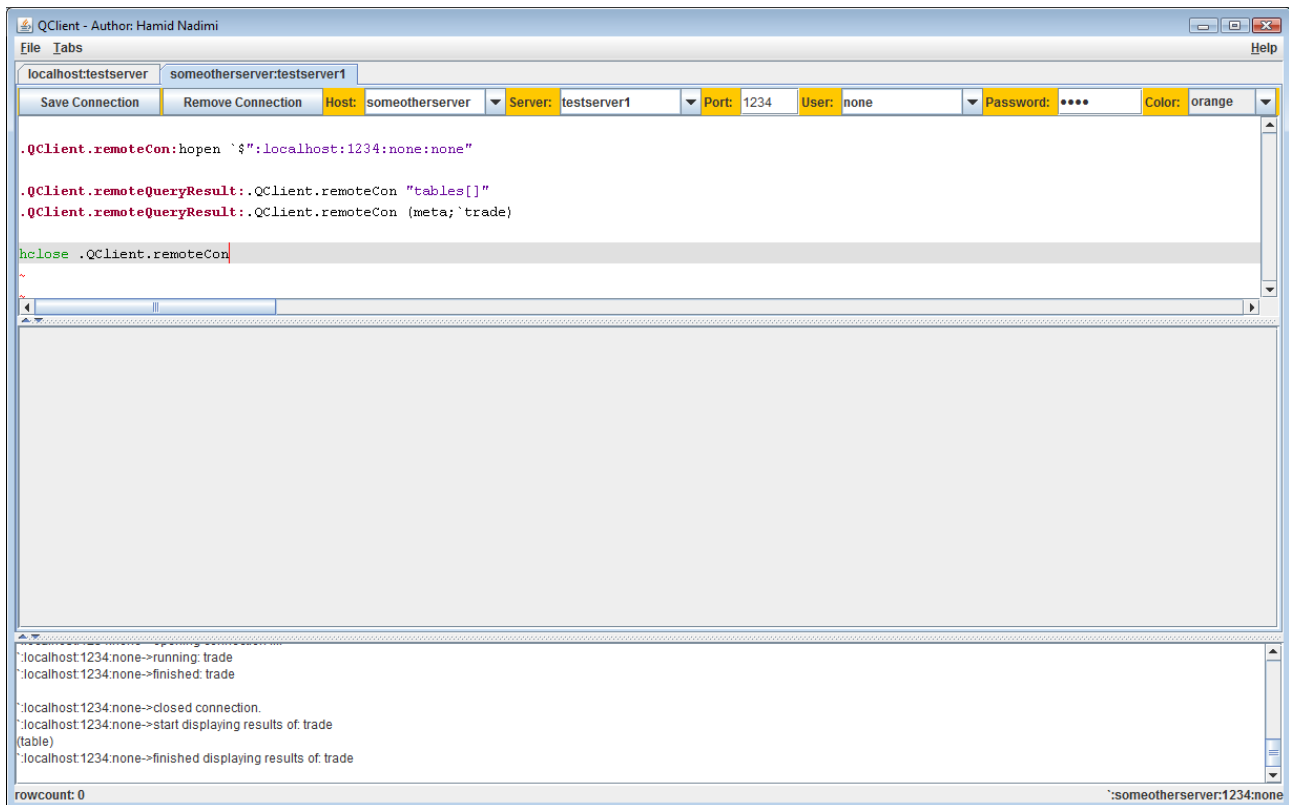
a)



b) go to target server:



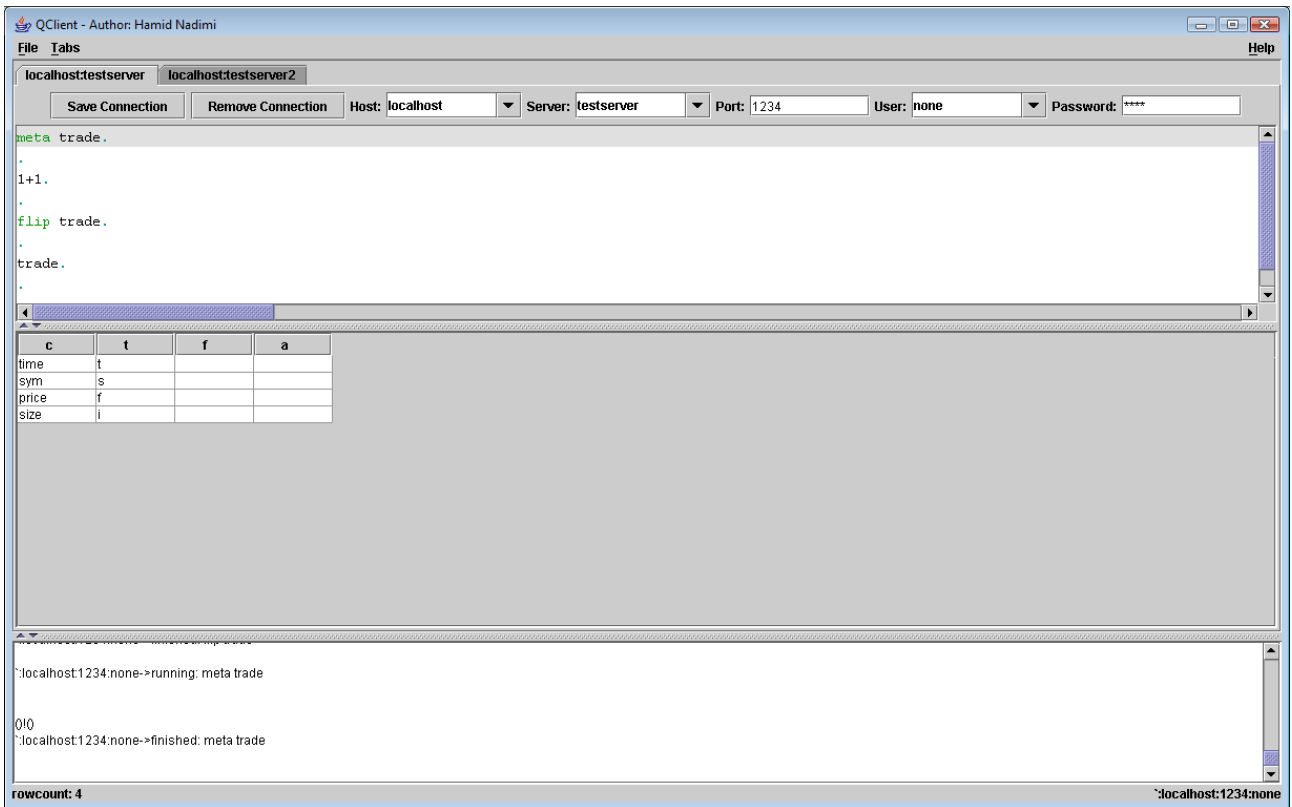
and choose paste:



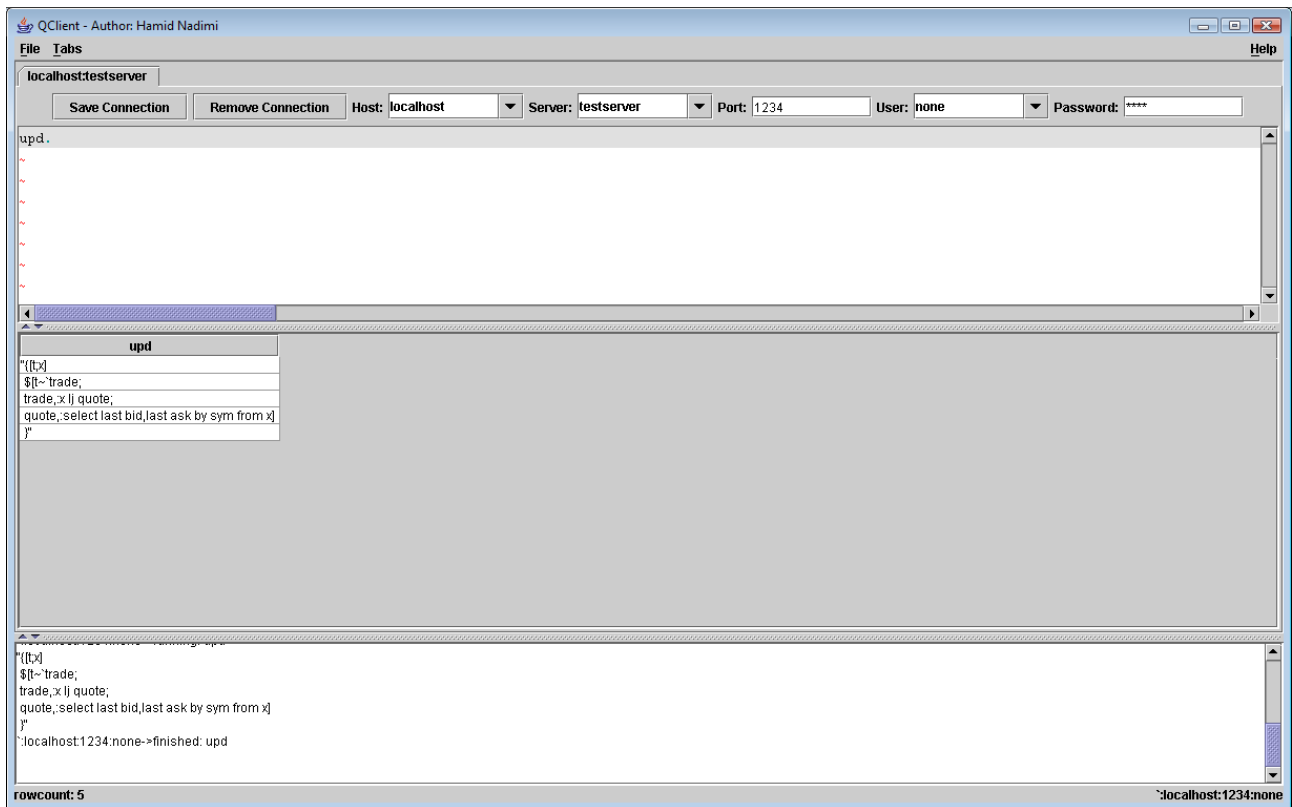
Now you just need to execute these lines to connect to the first server from here and do something (for example copy a table).

7 Table-Panel

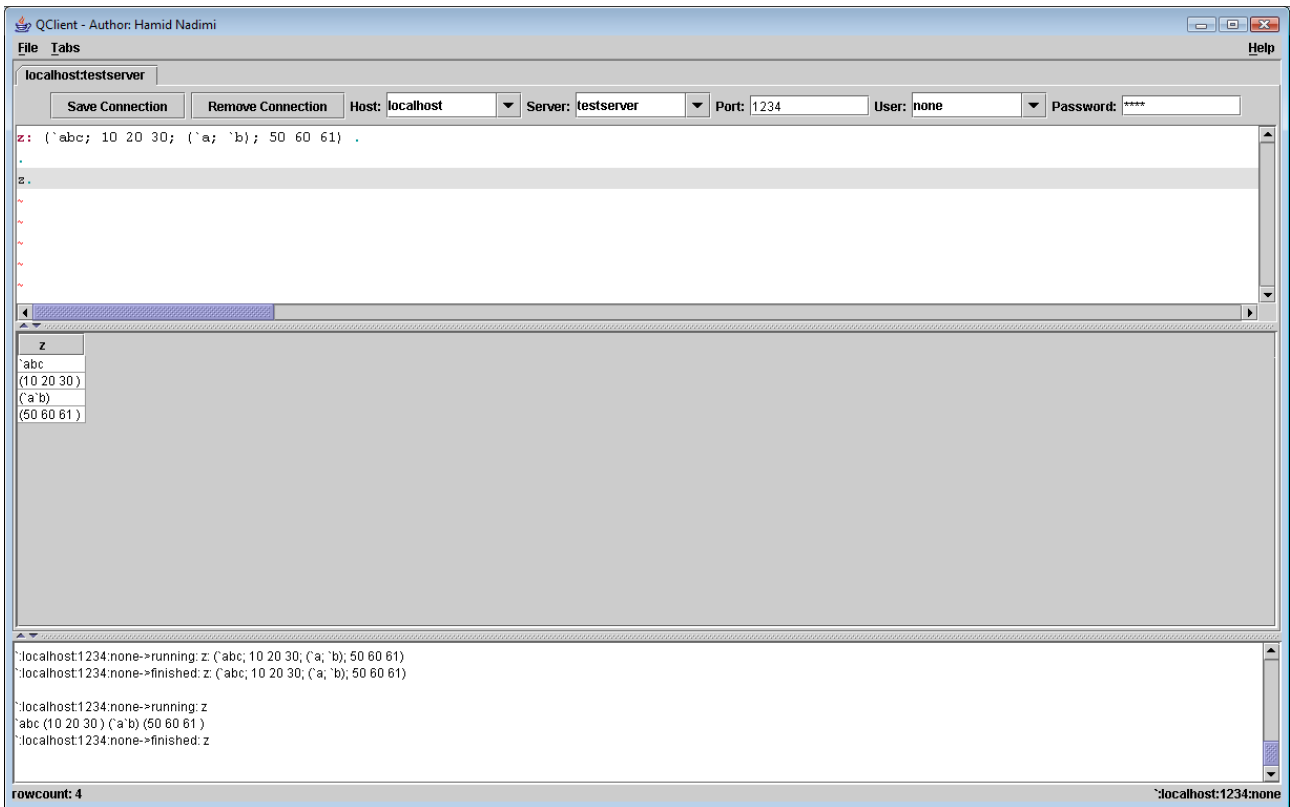
Everything that can be represented in a table will be shown in here. Otherwise this panel remains untouched. You can sort the table by one columns (click column header) or more columns (hold ctrl + press next columns header). Reorganize columns by drag and drop. Save to CSV by mouse-right-click. Open CSV also by right-click.



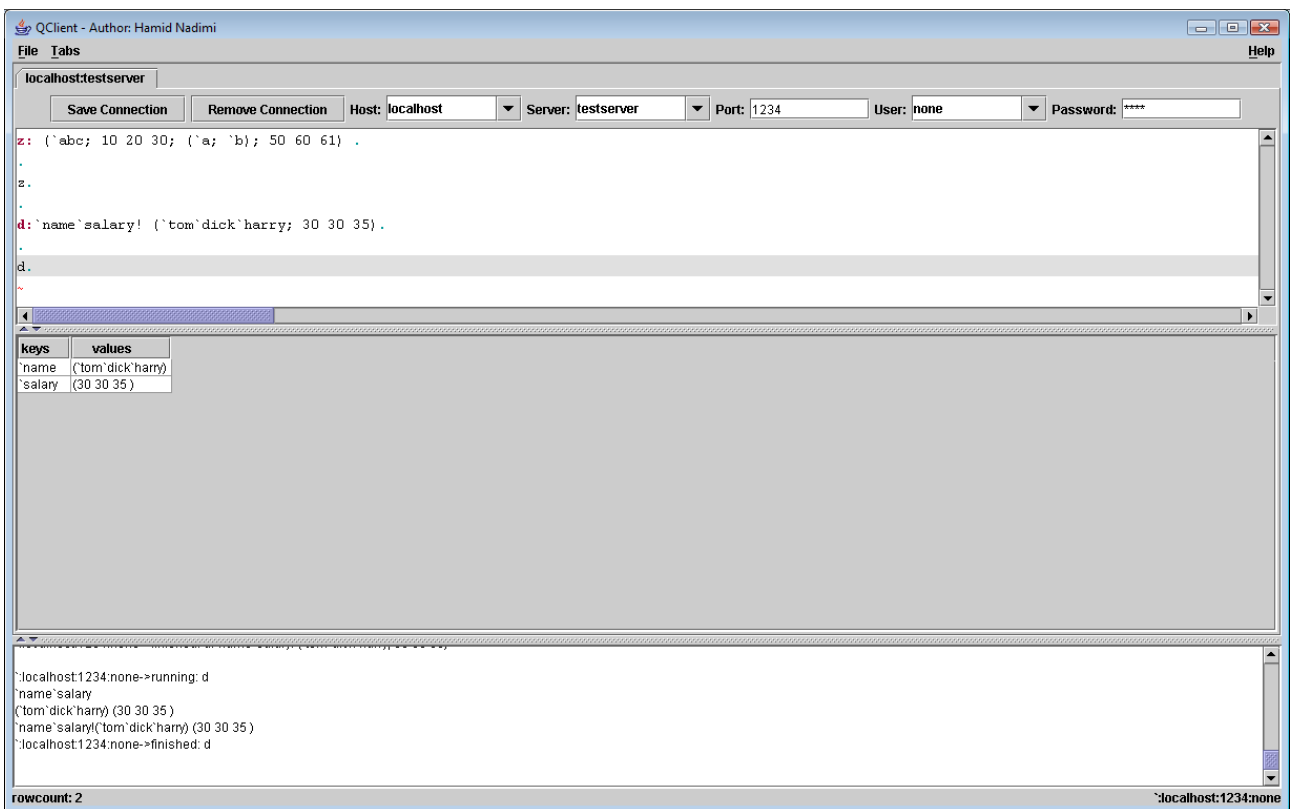
Displaying a function:

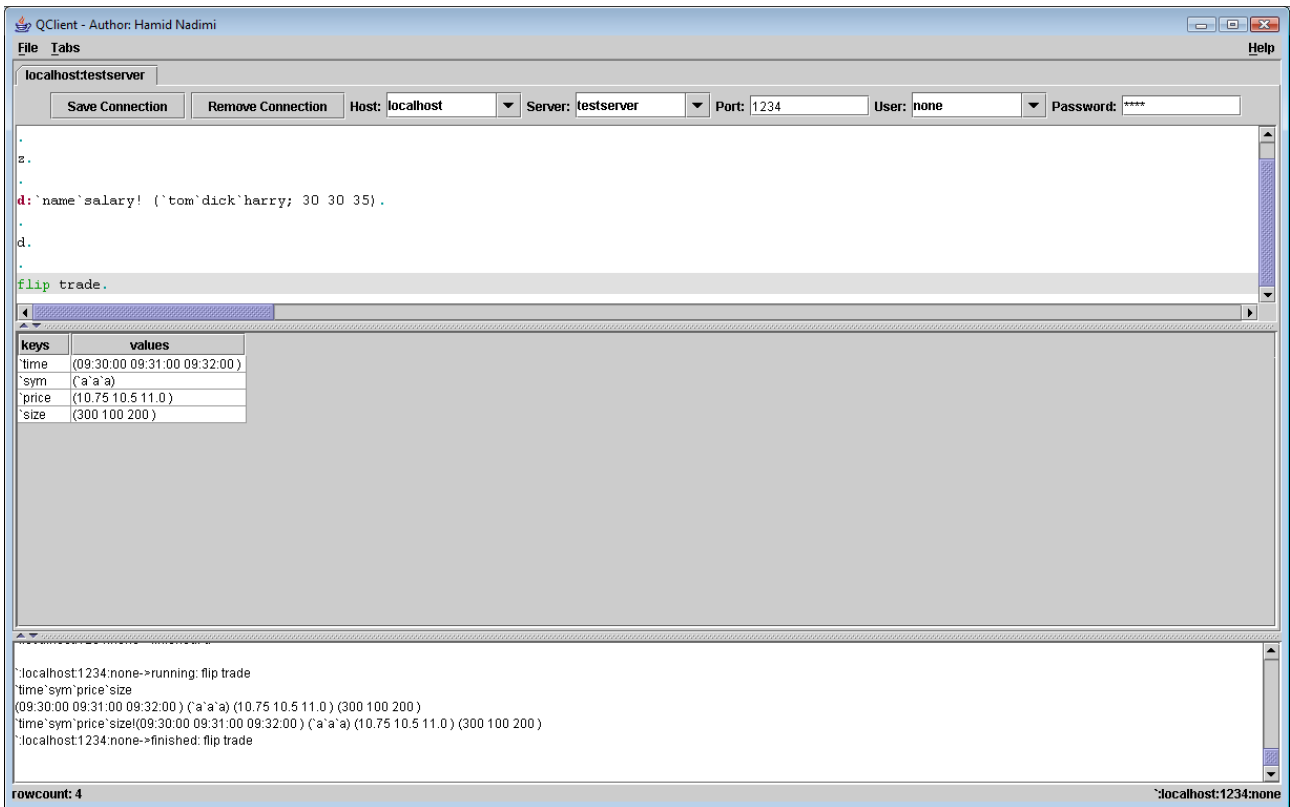


Lists:

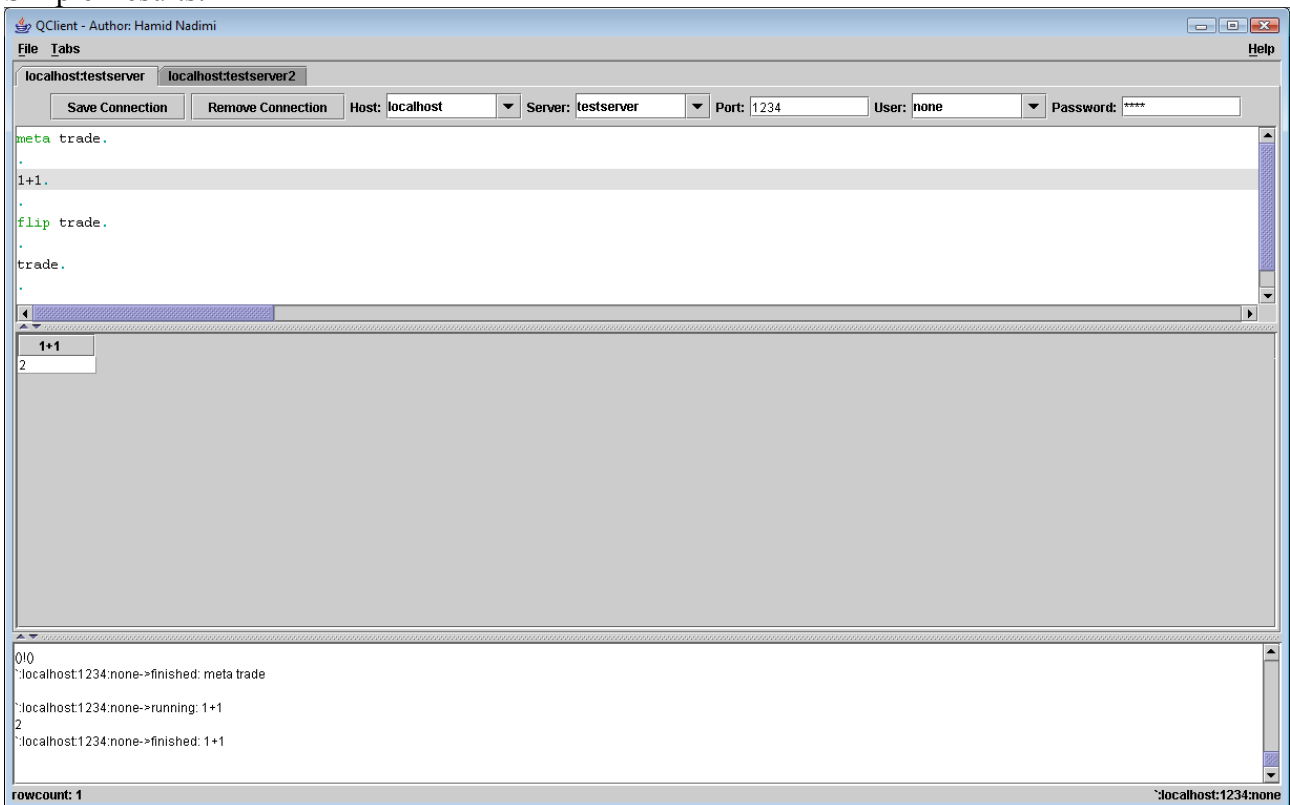


Dictionaries:

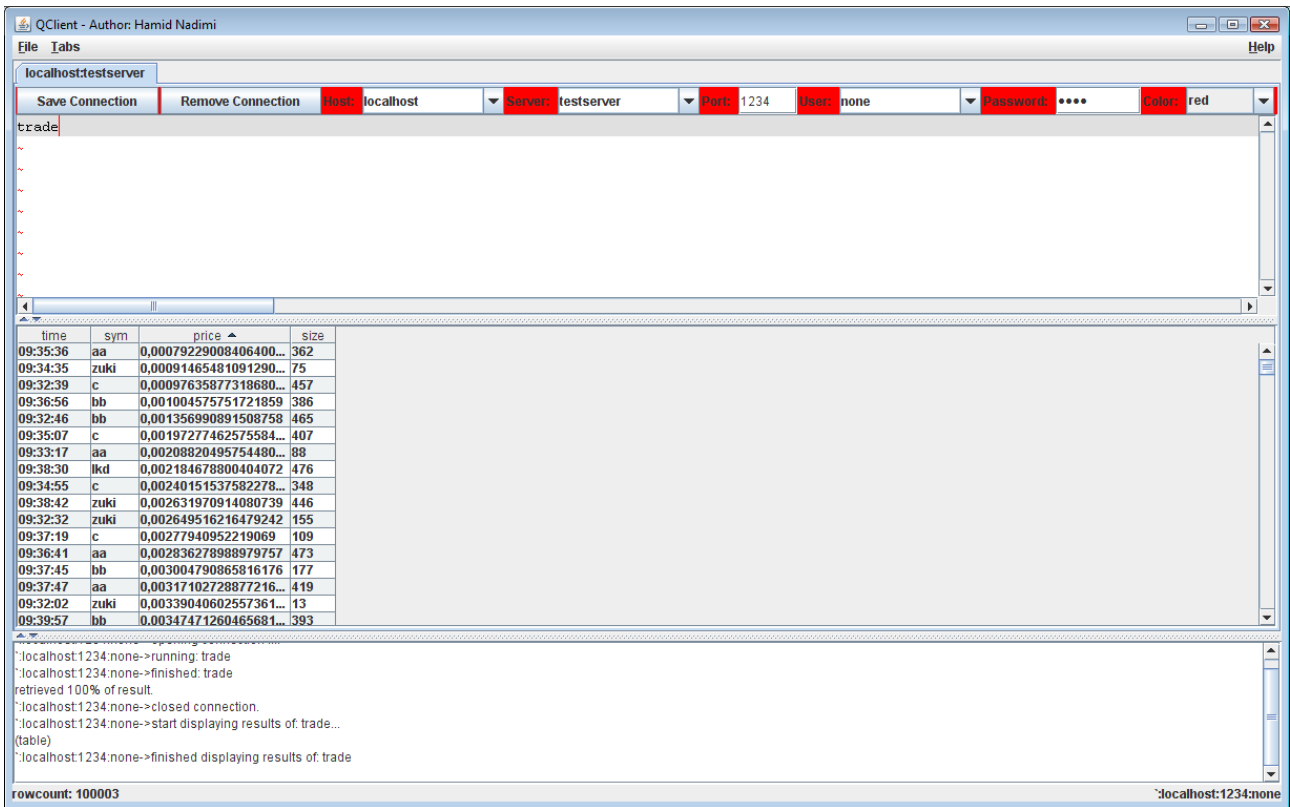




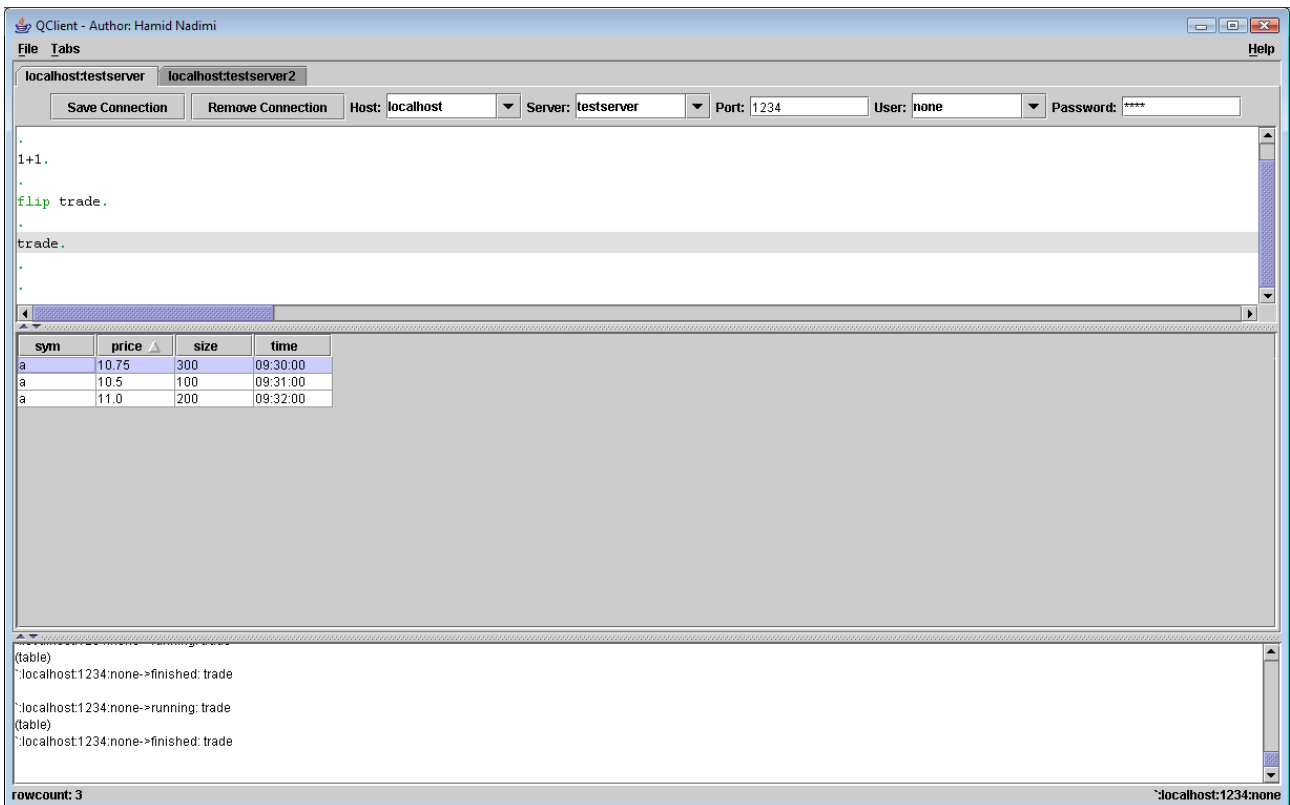
Simple Results:



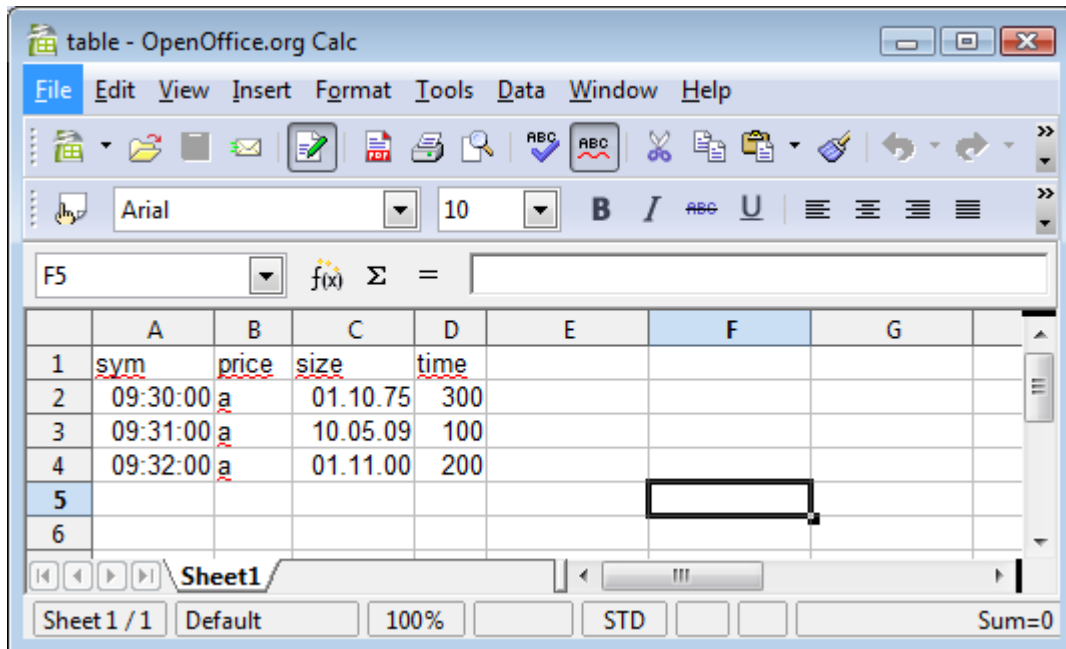
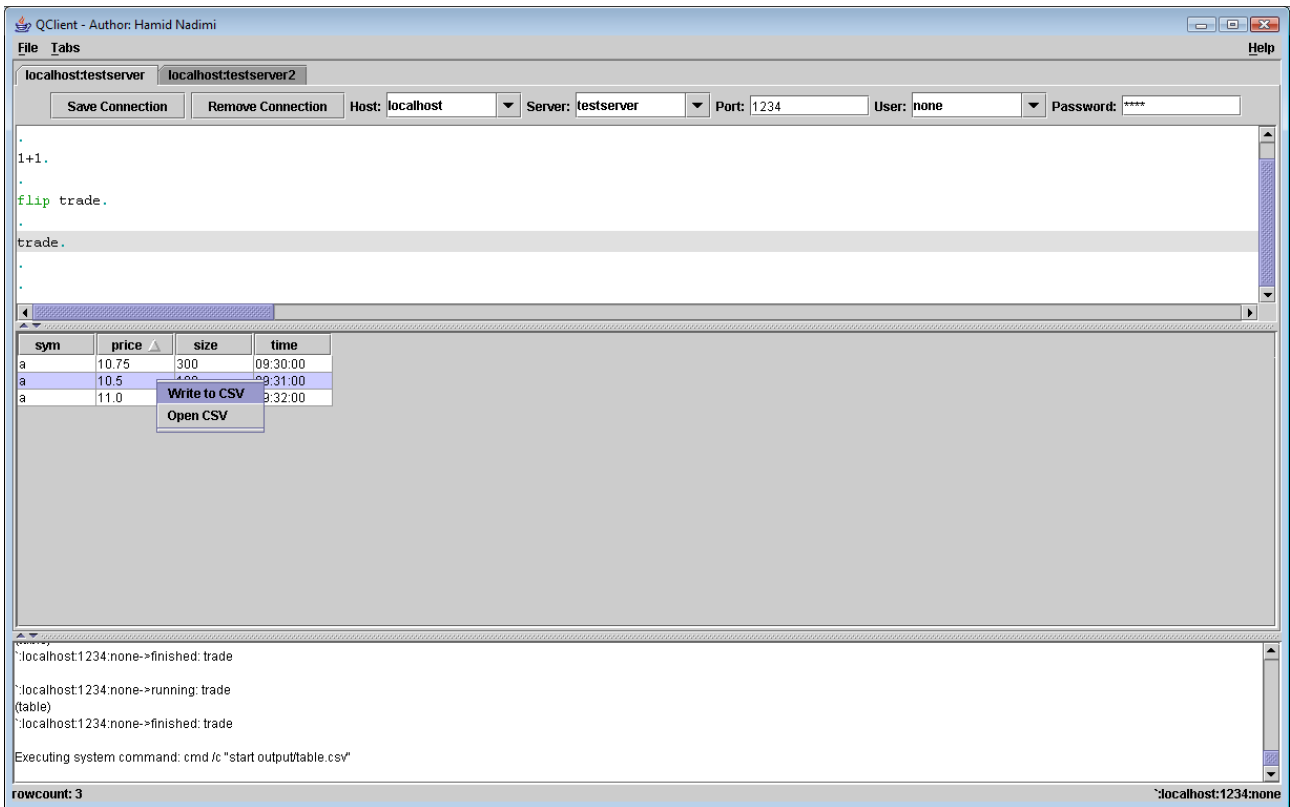
Sorted by price:



Columns reorganized:



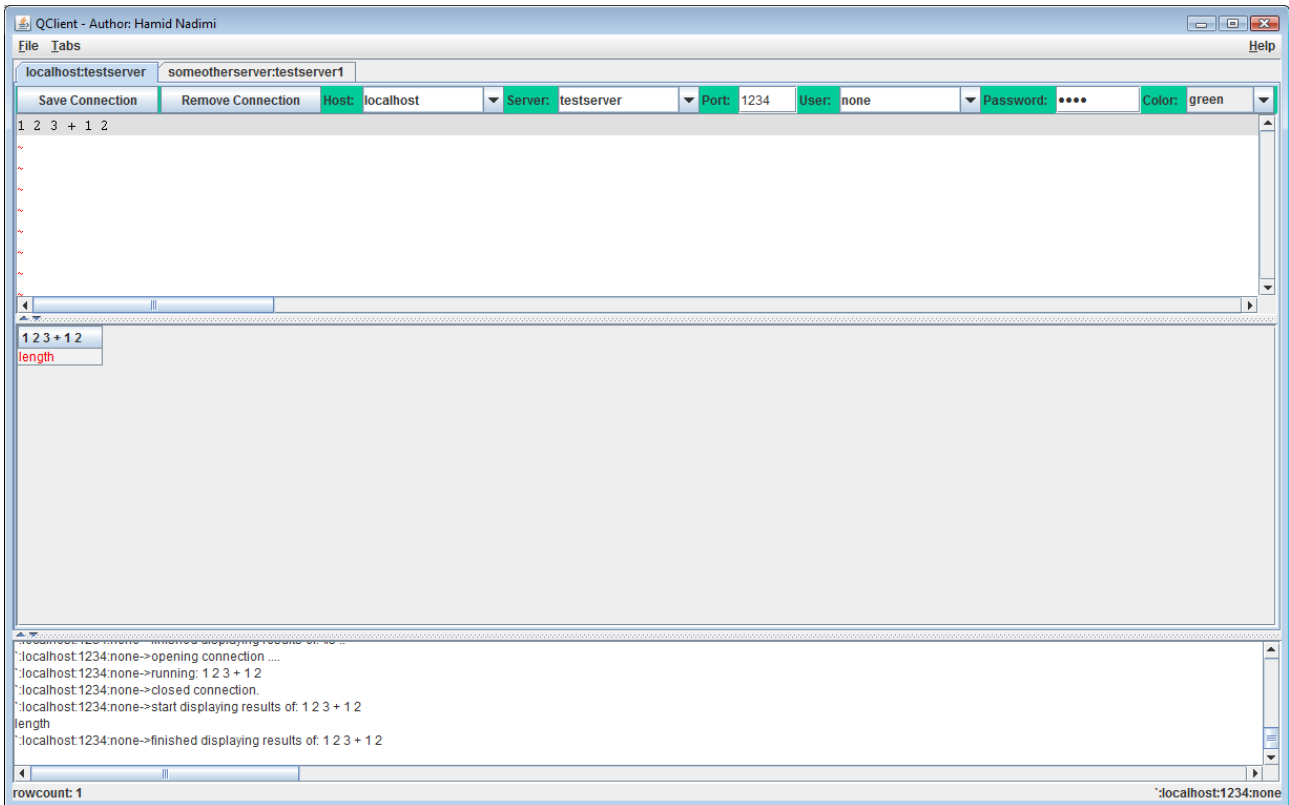
Write to CSV and open CSV:



You can change the delimiter for csv files in cfg/QClient.cfg:

Configuration.delimiter=;

All Errors are displayed in red:



8 Log-Panel

Logging is done via log4j, every thing is logged to stdout, logfile and the logpanel. Logfiles are dailyrolled and stored in log/. They contain also timestamps. You can set logging to DEBUG in cfg/QClient.cfg to see more information:

```
log4j.rootLogger=INFO, stdout, F, TEXTAREA
```

Log-Panel is shared among all Tabs. Each query is enclosed in these such strings:

```
`:localhost:1234:none->running: trade
```

```
`:localhost:1234:none->finished: trade
```

Where first part shows the connection where the query is running and second part the query.

Between those two messages you will see the result (In case of tables only (table)).

Examples:

```
`:localhost:1234:none->running: trade
```

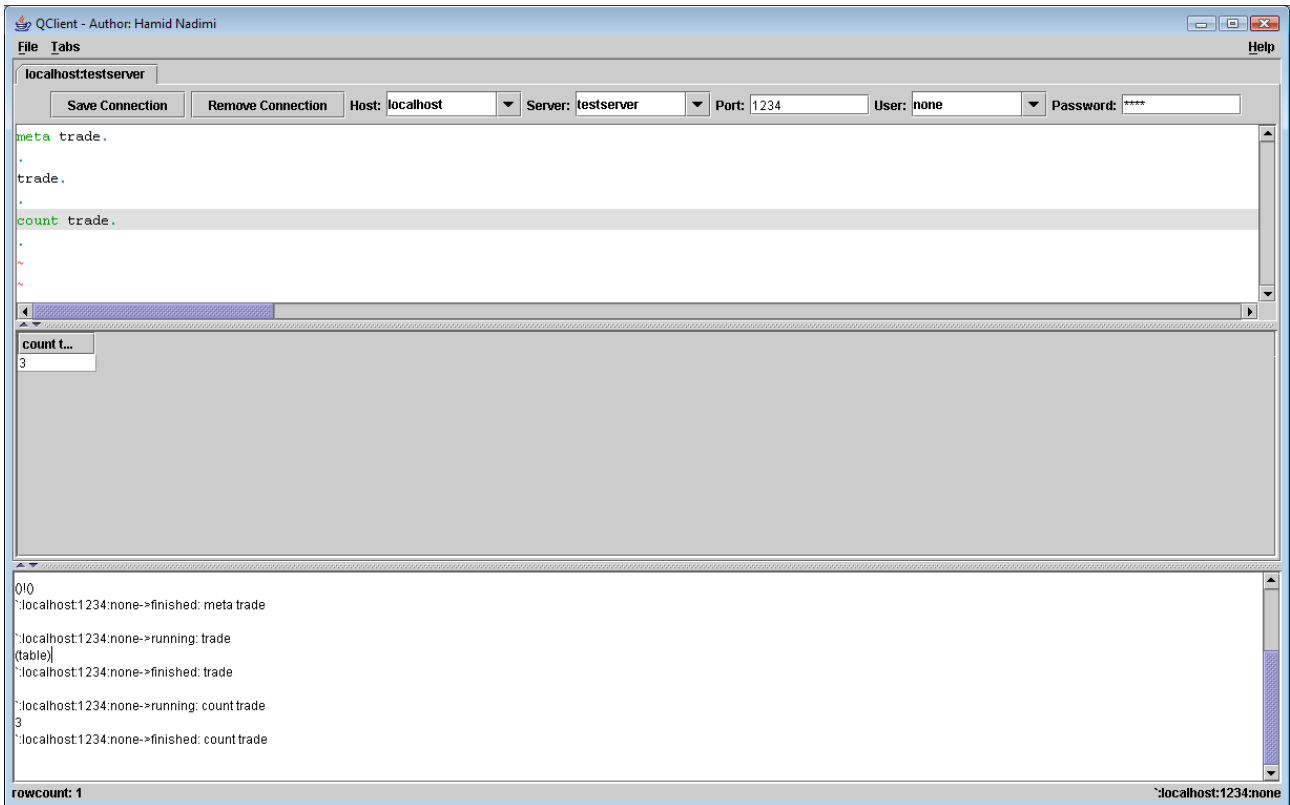
```
(table)
```

```
`:localhost:1234:none->finished: trade
```

```
`:localhost:1234:none->running: count trade
```

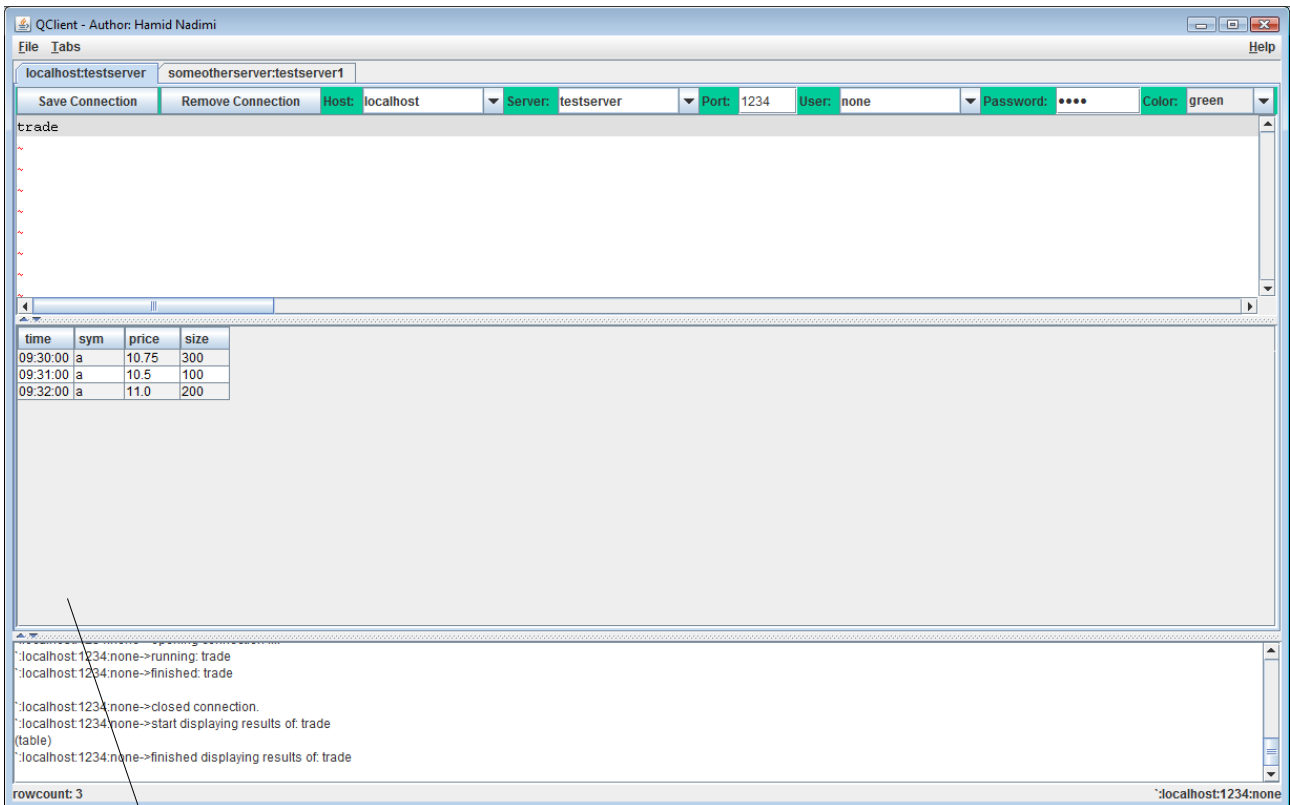
```
3
```

```
`:localhost:1234:none->finished: count trade
```



9 Misc

You can resize all panels by mouse and Close/Expand by clicking on the lower arrows on the leftside of each panel.



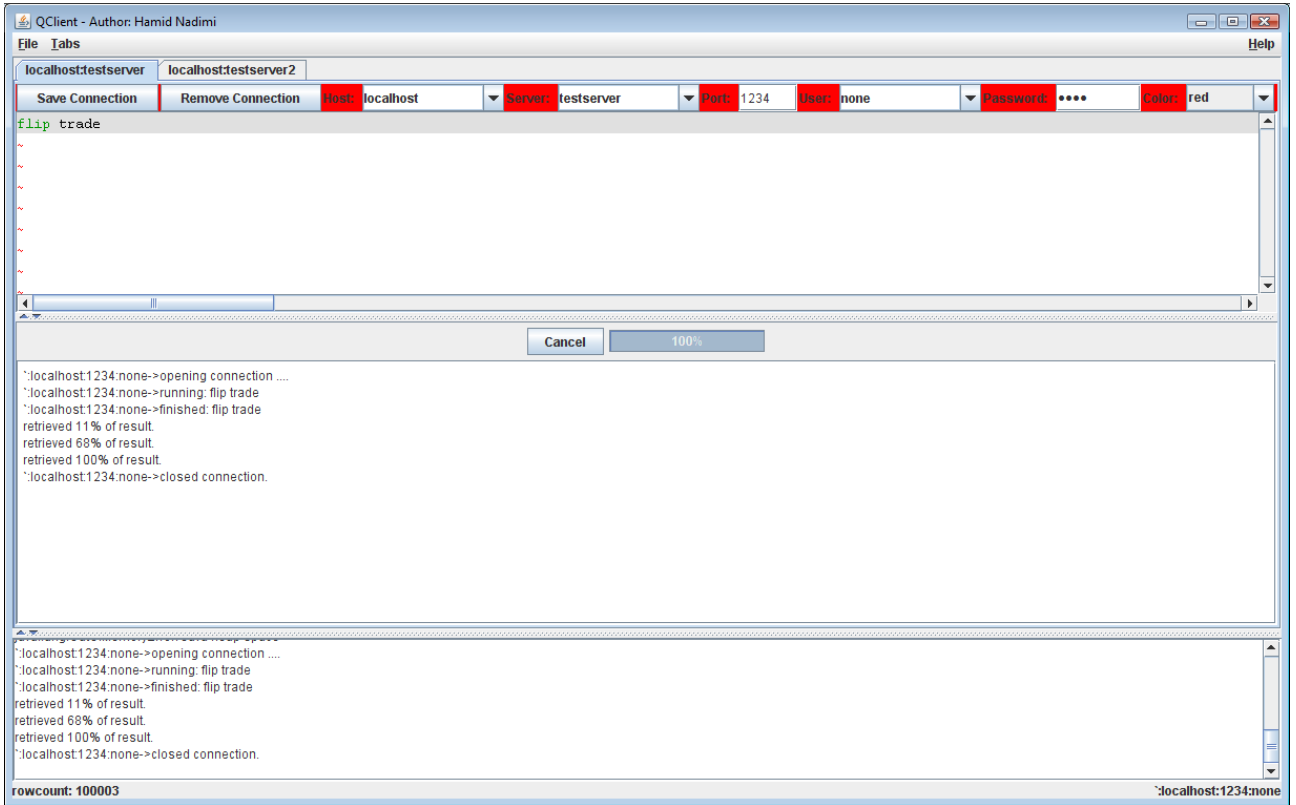
These for example expand/close log area.

You can change the delimiter for csv files in cfg/QClient.cfg:

Configuration.delimiter=;

See also other configurations in this file.

One handy feature is displaying connection status. So for example if server is waiting for connection you see it in the progressbar and as test. If you an error occurs you get the exception in red font. You can also cancel a query on the client side (This doesn't affect the situation on server though.)



10 Disclaimer

THIS SOFTWARE IS PROVIDED BY THE COPYRIGHT HOLDERS AND CONTRIBUTORS “AS IS” AND ANY EXPRESS OR IMPLIED WARRANTIES, INCLUDING, BUT NOT LIMITED TO, THE IMPLIED WARRANTIES OF MERCHANTABILITY AND FITNESS FOR A PARTICULAR PURPOSE ARE DISCLAIMED. IN NO EVENT SHALL THE REGENTS OR CONTRIBUTORS BE LIABLE FOR ANY DIRECT, INDIRECT, INCIDENTAL, SPECIAL, EXEMPLARY, OR CONSEQUENTIAL DAMAGES (INCLUDING, BUT NOT LIMITED TO, PROCUREMENT OF SUBSTITUTE GOODS OR SERVICES; LOSS OF USE, DATA, OR PROFITS; OR BUSINESS INTERRUPTION) HOWEVER CAUSED AND ON ANY THEORY OF LIABILITY, WHETHER IN CONTRACT, STRICT LIABILITY, OR TORT (INCLUDING NEGLIGENCE OR OTHERWISE) ARISING IN ANY WAY OUT OF THE USE OF THIS SOFTWARE, EVEN IF ADVISED OF THE POSSIBILITY OF SUCH DAMAGE.

Please send your suggestions and bug reports to hamid.nadimi@gmail.com.